

PARTS MANUAL

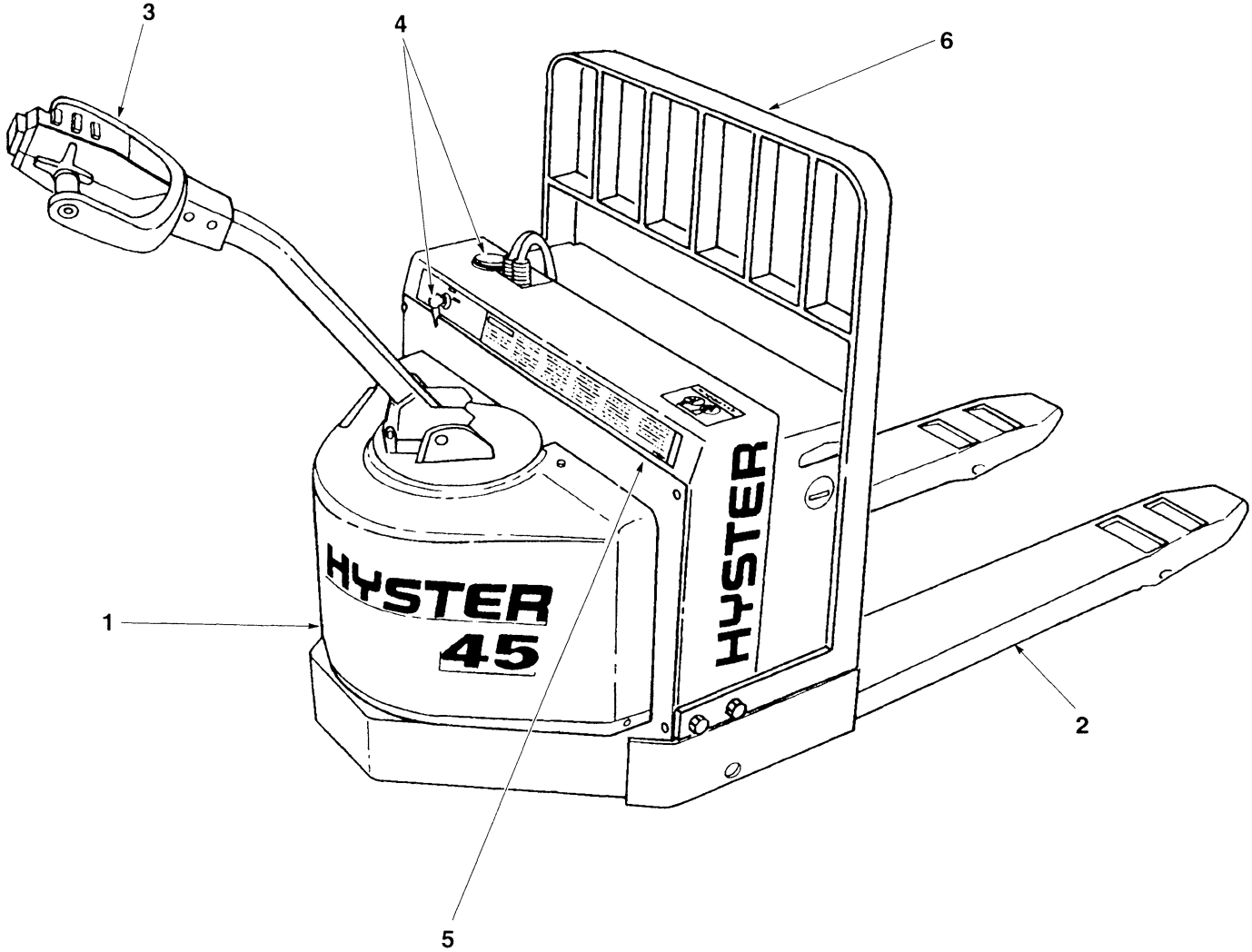
**WALKIE
W45XT**

(A215)

CUSTOMER EDITION

HYSTER

ILLUSTRATED CONTENTS



REF.	DIVISION	PAGE
1	Frame/Drive Unit and Brake	1
2	Lift Linkage and Forks	11
3	Steer Handle	15
4	Electrical	21
5	Hydraulic	31
6	Optional Equipment	37
7	Numerical Index	39

TABLE OF CONTENTS

DESCRIPTION	PAGE NO.
BRAKE-LINKAGE (Figure 6)	9
CONTACTOR-FORWARD/REVERSE (Figure 15)	30
CONTROL PANEL (Figure 14) FIRST USED ON S/N A215H03298S	28
CONTROL PANEL (Figure 13) LAST USED ON S/N A215H03297S	26
DRIVE FRAME (Figure 2)	3
ELECTRICAL (Figure 12) FIRST USED ON S/N A215H03298S	24
ELECTRICAL (Figure 11) LAST USED ON S/N A215H03297S	22
HOODS AND COVERS (Figure 1)	2
HYDRAULIC MOTOR (Figure 19)	36
HYDRAULIC PUMP AND MOTOR (Figure 18)	34
HYDRAULIC SYSTEM (Figure 16)	32
LABELS/PAINT (Figure 3)	4
LIFT CYLINDER (Figure 17)	33
LIFT LINKAGE AND FORKS (Figure 7)	12
LOAD BACKREST (Figure 20)	38
MASTER DRIVE UNIT AND BRAKE (Figure 4)	6
STEER HANDLE HEAD (Figure 10) FIRST USED ON S/N A215N03582T	18
STEER HANDLE HEAD (Figure 9) LAST USED ON S/N A215N03581T	16
TRACTION MOTOR (Figure 5)	8
WHEEL/SUPPORT (Figure 8)	14

HOW TO USE THE ILLUSTRATED PARTS MANUAL

This Parts manual describes and illustrates assemblies, subassemblies and detail parts needed for service replacement.

The different constructions are indicated by keys, symbols and footnotes.

INDEX-MASTER

DESCRIPTION	PAGE
Accelerator	56-58
Accumulator	24-25
Auto-Drive	42-43
Auto-Steering	
Brake	
Brake-Park Lever Adjusted	
Brake-Park Seal Adjusted	
Carriage Side-Spill	
Carriage Valve Two-Stage Full Free Lift	
Carriage Valve Two-Stage Full Free Lift	
Carriage Valve Two-Stage Full Free Lift	

INDEX-NUMERICAL

PART NO.	FIGURE	REF. NO.	PART NO.	FIGURE	REF. NO.	PART NO.	FIGURE	REF. NO.	PART NO.	FIGURE	REF. NO.
360287	48	1	370158	42	11	373206	11	14	373605	81	34
360581	47	2	370250	43	11	373207	82	14	373606	22	3
368615	48	1	370251	1	7	373211	82	14	373607	22	3
368616	54	1	370252	1	7	373211	82	14	373608	22	3
368618	30	2	370253	1	7	373220	70	1	373613	43	4
368618	47	2	370254	1	7	373221	66	1	373614	43	4
368642	48	8	370255	1	7	373222	66	1	373615	26	11
368643	42	8	370256	1	7	373223	66	1	373617	42	11
368648	43	3	370257	1	7	373224	66	1	373618	43	11
368648	39	3	370258	1	7	373224	66	1	373619	43	11

ILLUSTRATED CONTENTS

REF.	DIVISION	PAGE
1	Frame/Drive Unit and Brake	6
2	Lift Linkage and Forks	6
3	Steer Handle	12
4	Electrical	16
5	Hydraulic	20
6	Optional Equipment	26
7	Numerical Index	31
		33

SEAT (FIG. 9)

KEY:

- A-Without Seat Adjusted Park Brake And Without Operator Restraint
- B-With Seat Adjusted Park Brake And Without Operator Restraint
- C-Without Seat Adjusted Park Brake And With Operator Restraint
- D-With Seat Adjusted Park Brake And With Operator Restraint

REF. PART NO.	NAME OF PART	A	B	C	D	REF. PAGE
1	364811 Standard Seat	1	1	1	1	10
1	360276 Fabric Seat	1	1	1	1	11
1	365434 Suspension Seat	1	1	1	1	12
2	374171 Suspension Seat	1	1	1	1	13
2	1346927 Suspension Seat	1	1	1	1	14
2	1346926 Suspension Seat	1	1	1	1	14
3	326381 Cushion	2	2	2	2	15
4	324364 Spring-Coil	1	1	1	1	1
5	326363 Spring-Tension	1	1	1	1	1
6	326363 Absorber-Shock	1	1	1	1	1
7	326369 Pan-Seat	1	1	1	1	1
8	326369 Spindle-Adj.	1	1	1	1	1
9	326362 Knob-Lever	1	1	1	1	1

WHEN THE PART NUMBER AND THE NEXT HIGHER ASSEMBLY IS NOT KNOWN:

1. USE: Determine the function and application of the part required. Turn to the Illustrated Contents page immediately behind the front cover, and select the most appropriate area.
2. Use the Section Index to determine the assembly which would normally contain the part required. Then locate the part on the assembly breakdown page.

WHEN THE PART NUMBER IS NOT KNOWN AND THE NEXT HIGHER ASSEMBLY IS KNOWN:

3. Determine the assembly the required part is used on. Turn to the Table of Contents page immediately following the Illustrated Contents.
4. Locate the assembly the required part is used on and turn to the page indicated for that assembly. Proceed then to locate the part on the assembly breakdown page.

WHEN THE PART NUMBER IS KNOWN:

5. Use the Numerical Index to find the part number. Turn to the Figure listed and locate the part as indicated by the reference number.

GENERAL:

The Assembly Breakdowns include part numbers, description, quantities required, keys and footnotes to help in selecting the correct parts.

6. Keys are used to show effective serial numbers for two or more similar assemblies, RH and LH assembly parts, etc. Select the appropriate key, "A", "B", "C", or "D" and the corresponding quantity column to find the required parts.
7. Indented descriptions under "Name of Part" are used to indicate subparts of assemblies. A major assembly is not indented. Parts under the first, second, or third indent are sub-parts of the major assembly shown above them.
8. Quantities shown are for one assembly. Note that two assemblies are shown, but the quantities of the subparts are indicated as three and three. This means three per assembly.
9. Engineering Change Notice (ECN) numbers for pending serial numbers are shown to allow for the inclusion of the most current parts information. Contact your local Dealer for Hyster Lift Trucks for serial number information listed by ECN number.

ORDERING PARTS:

When ordering replacement parts, give the unit serial number, part number, name of part and quantity required.

For any further information on parts, service, or ordering, consult your local Dealer for Hyster Lift Trucks.

**Thanks very much for your reading,
Want to get more information,
Please click here, Then get the complete
manual**

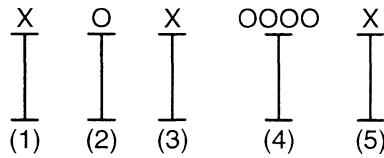
JustClickHere 

NOTE:

**If there is no response to click on the link above,
please download the PDF document first, and then
click on it.**

**Have any questions please write to me:
admin@servicemanualperfect.com**

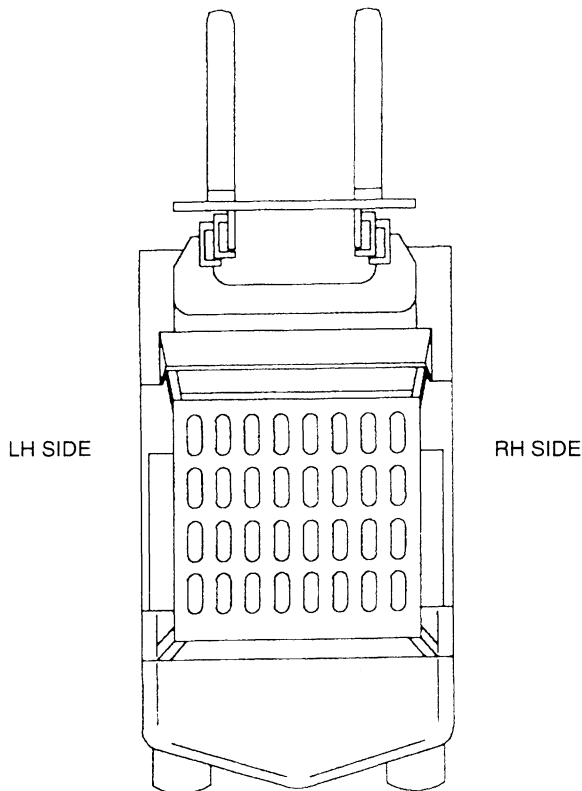
UNIT IDENTIFICATION UNIT S/N



- (1) & (2) The first letter and number denote the design series and model of the unit.
- (3) The second letter denotes the Plant at which the unit was manufactured.
- (4) The number series denotes the serial number of the unit.
- (5) The final letter denotes the year of manufacture starting with "A" in 1957 and 1980. The letters "I", "O", and "Q" will not be used.

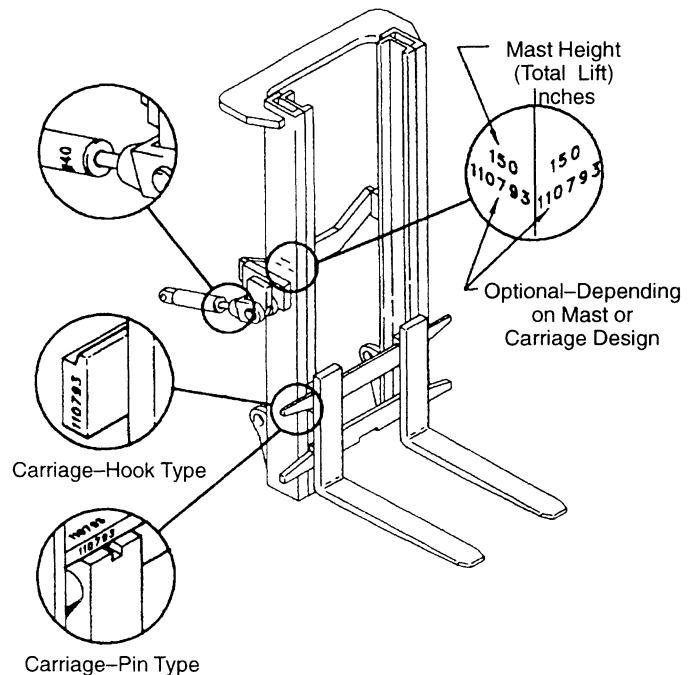
For pending serial numbers contact your local Hyster Dealer.

Parts referred to in this book as right or left hand parts are in accordance with the illustration below.



LIFT EQUIPMENT IDENTIFICATION

1. Mast group numbers and total lift heights are stamped on the right hand outer mast approximately four feet from the bottom of the fork. The group numbers include the inner and outer masts, lift cylinder, lift chain and bleeder hoses or pipes.
2. The carriage and tilt cylinder numbers are located as shown. Lift cylinder numbers are stamped on the cylinder shell near the bleeder screw or on the chain anchor. Fork part number, capacity rating, plant code letter and date of manufacture are stamped approximately six inches below the top RH side of the forks. Always refer to these group and part numbers when ordering service parts.



PUBLICATIONS

Every new lift truck is provided with at least three publications. These publications are the OPERATING MANUAL, the PERIODIC MAINTENANCE SECTION, and the DIAGRAM SECTION of the SERVICE MANUAL.

The Operating Manual must always be available on every lift truck. This manual has information that the operator must know for inspection and operation of the lift

truck. The PERIODIC MAINTENANCE SECTION has a recommended schedule of service intervals and the procedures for servicing the lift truck. The DIAGRAM SECTION includes the Electrical and Hydraulic Diagrams and Schematics for troubleshooting the lift truck.

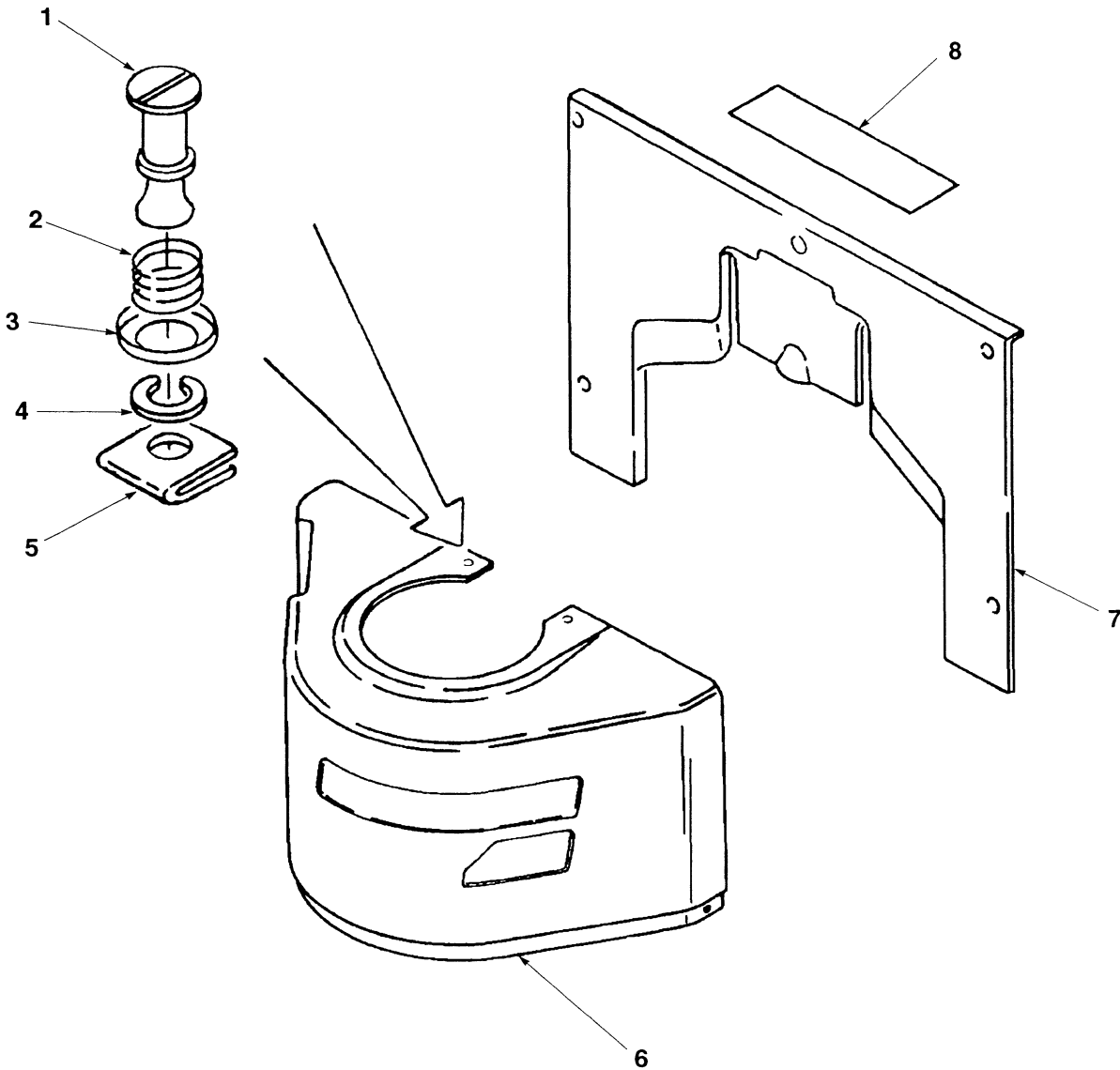
The PARTS MANUAL must be ordered with the new lift truck or through the Hyster Dealer Parts Department.

PUBLICATION	HYSTER PART NUMBER
Operating Manual	
English (U.S.)	897935
Service Manual (Complete)	897465
Frame (100 SRM 9)	897011
DC Motor Maintenance (620 SRM 294)	897076
MDU (630 SRM 507)	897488
Steering System (1600 SRM 508)	897489
Brakes (1800 SRM 509)	897490
Walkie Hydraulic System (1900 SRM 278)	897060
Curtis Transistor Motor Controller (2200 SRM 411)	897340
Electrical System (2200 SRM 279)	897061
Electrical Gauges, Meters and Senders (2200 SRM 143)	910110
Electrical Warning Devices (2200 SRM 144)	910111
Industrial Battery (2240 SRM 1)	899648
Battery Indicators (2260 SRM 138)	910114
Lifting Mechanism (4000 SRM 510)	897491
Periodic Maintenance (8000 SRM 627)	897938
Capacities and Specifications (8000 SRM 511)	897492
Diagrams (8000 SRM 457)	897401
Inch (SAE) and Metric Fasteners (8000 SRM 231)	910442
Parts Manual	897464
Operator Training Program	
Operator Training Kit Complete	
Slide Format with Carry Case	599628
1/2" VHS Format with Carry Case	852165
"Safety is an Attitude" (1/2" VHS)	852690
"Safety Rules" Playing Cards	852695
Sold Alone Kit Catalog	852505

FRAME/DRIVE UNIT AND BRAKE

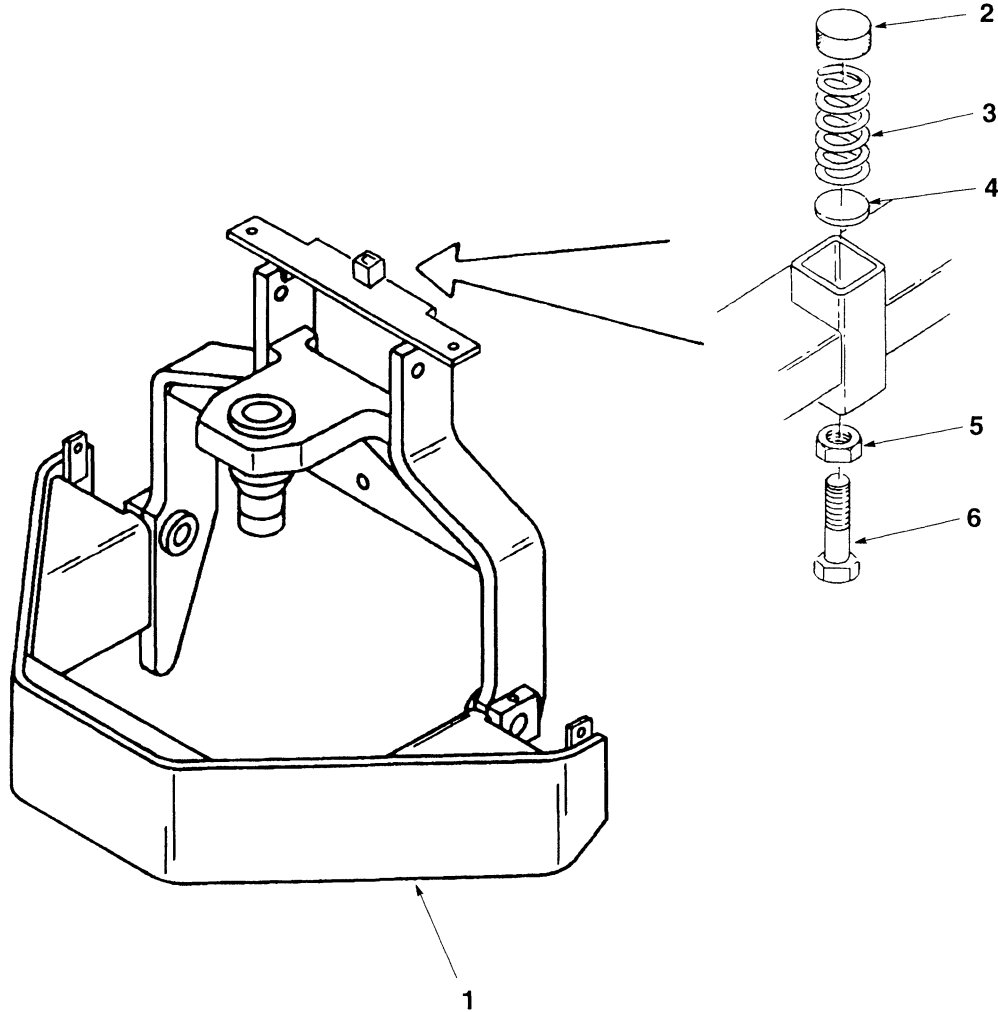
DESCRIPTION	PAGE NO.
BRAKE-LINKAGE (Figure 6)	9
DRIVE FRAME (Figure 2)	3
HOODS AND COVERS (Figure 1)	2
LABELS/PAINT (Figure 3)	4
MASTER DRIVE UNIT AND BRAKE (Figure 4)	6
TRACTION MOTOR (Figure 5)	8

HOODS AND COVERS (Figure 1)



REF.	PART NO.	NAME OF PART	QTY.	REF.	PART NO.	NAME OF PART	QTY.
1	2303427	Stud	9	5	188307	Nut	9
2	2305960	Spring	9	6	2310132	Cover	1
3	2307518	Cupped Washer	9	7	2310331	Cover	1
4	2308460	Retainer	9	8	2303388	Cover	1

DRIVE FRAME (Figure 2)



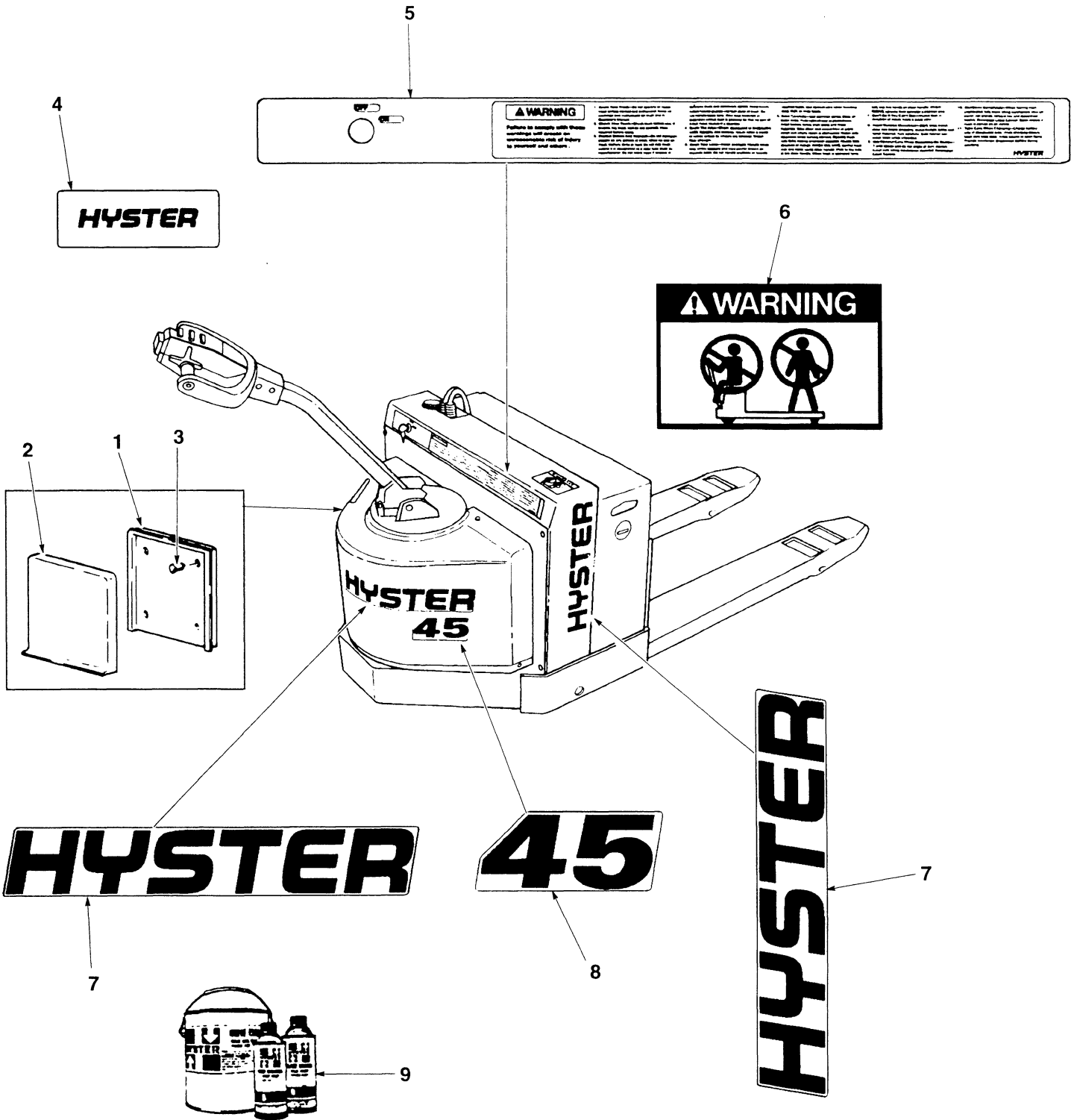
Key

A: Rubber Drive Tire

B: Poly Drive Tire

REF.	PART NO.	NAME OF PART	QTY.		REF.	PART NO.	NAME OF PART	QTY.	
			A	B				A	B
1		Drive Frame	1	1	4	314643	Washer		1
2	314642	Pad		1	5	15055	Nut		1
3	310836	Spring		1	6	18498	Capscrew		1

LABELS/PAINT (Figure 3)



LABELS/PAINT

<u>REF.</u>	<u>PART NO.</u>	<u>NAME OF PART</u>	<u>QTY.</u>	<u>REF.</u>	<u>PART NO.</u>	<u>NAME OF PART</u>	<u>QTY.</u>
1	335989	Base	1	7	2305417	Hyster Label	3
2	335991	Cover	1	9	1345809	Yellow Paint–Spray	AR
3	222029	Rivet	4	9	1345808	Yellow Paint–1 Gallon	AR
4	2311237	Hyster Label	1	9	1344901	Black Paint–Spray	AR
5	2304371	Warning Label	1	9	1344902	Black Paint–1 Gallon	AR
6	2302775	Warning Label	1				

NOTE: Truck is to be painted yellow with the following exceptions:

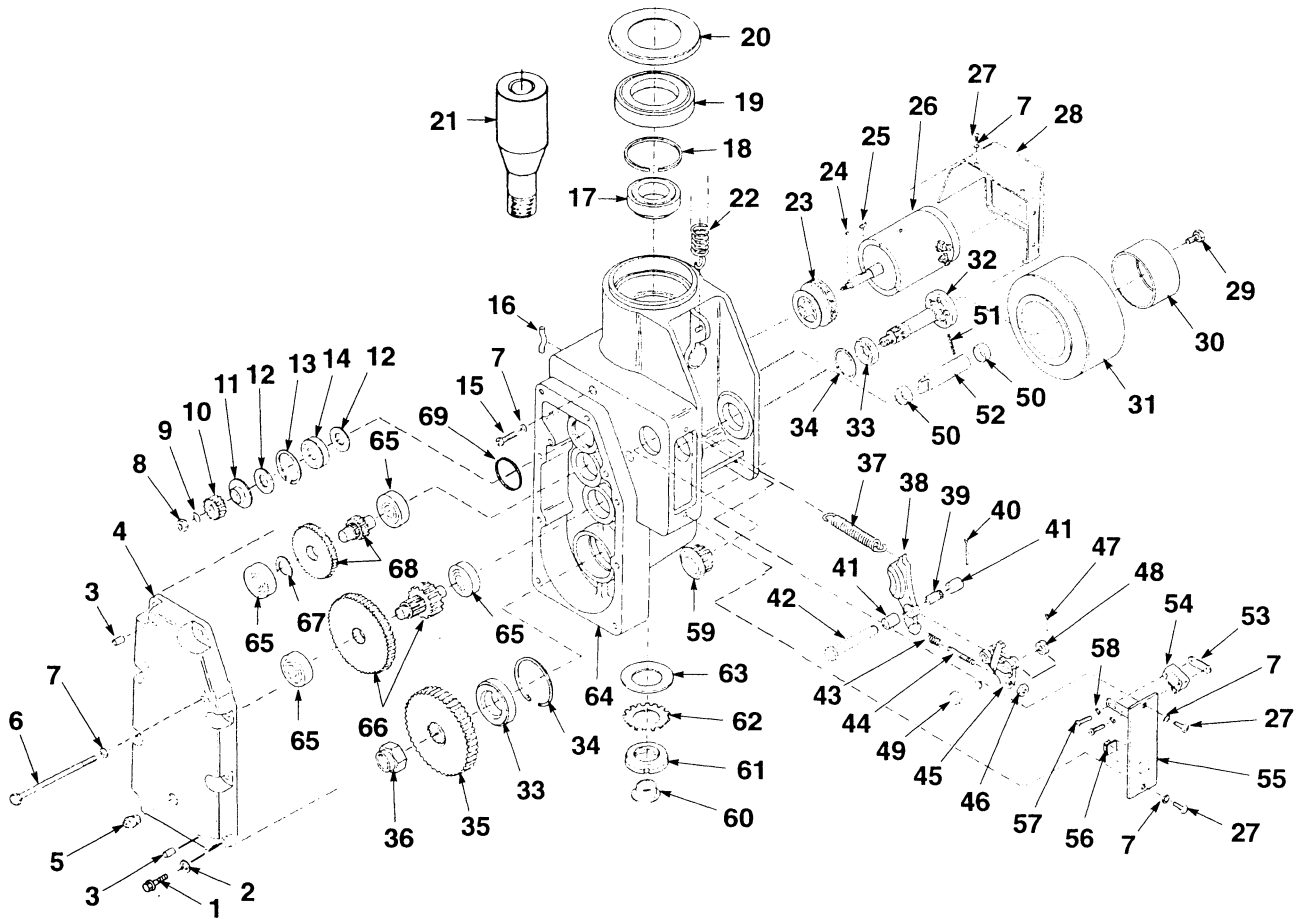
Lo-Gloss Black
Drive Unit Weldment
Control Handle

Not Painted

Control Head
Plastic Knobs
Accelerator Cover and Switches
Accelerator Grip
Tires
Name and Patent Plates
Gauges

MASTER DRIVE UNIT AND BRAKE (Figure 4)

TOP-MOUNTED HANDLE



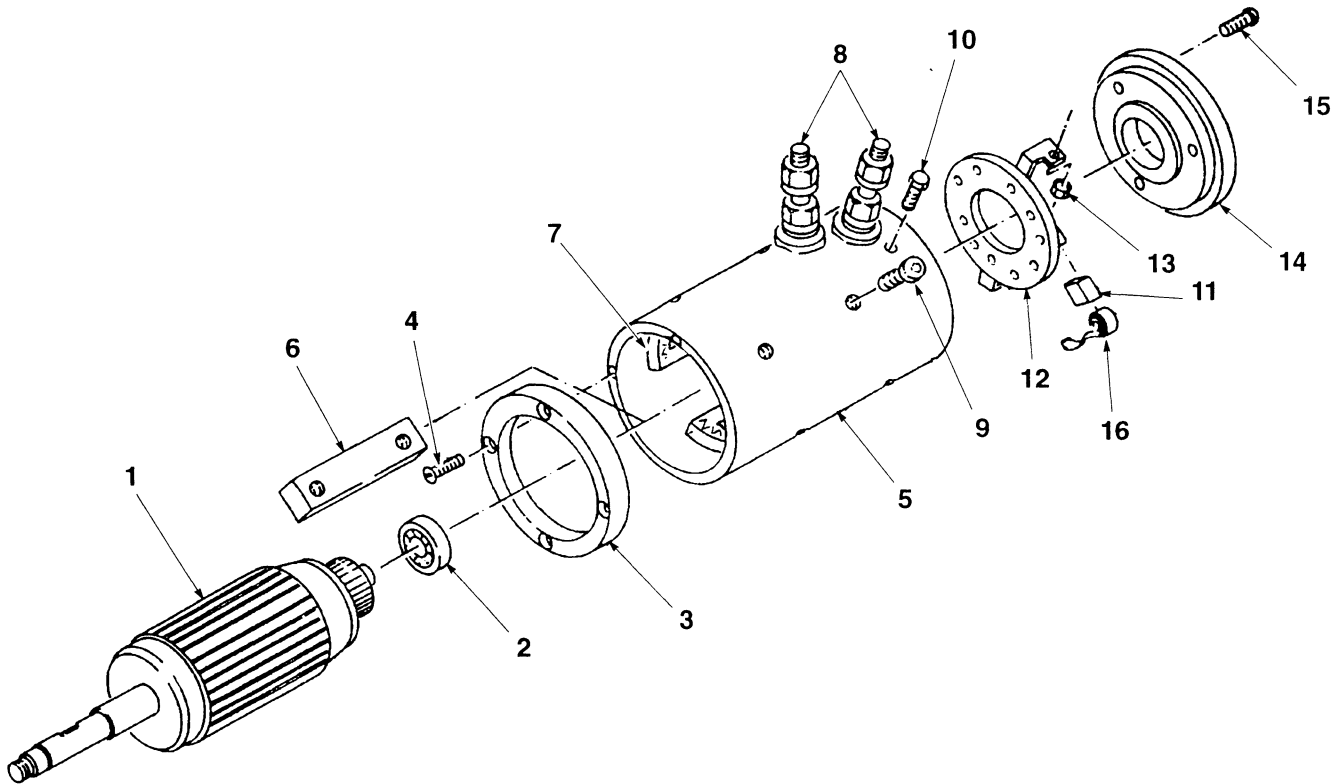
MASTER DRIVE UNIT AND BRAKE

TOP-MOUNTED HANDLE

REF.	PART NO.	NAME OF PART	QTY.	REF.	PART NO.	NAME OF PART	QTY.
1	16836	Capscrew	8	39	2302396	Bushing	1
2	15155	Lockwasher	8	39	\$ 2309412	Bushing	1
3	2302439	Dowel	2	40	2302589	Cotter Pin	1
4	2304156	Cover	1	41	2311334	Bushing	2
5	2302190	Plug	1	42	* 2302412	Pivot Pin	1
5	\$ 2302620	Plug	1	42	% 1369407	Pivot Pin	1
6	2033140	Capscrew	2	43	2306414	Spring	1
7	15915	Lockwasher	5	43	\$ 2305435	Spring	1
8	2305049	Locknut	1	44	2305118	Setscrew	1
8	* 2305058	Locknut	1	44	\$ 2309815	Setscrew	1
9	221767	Washer	1	45	2304545	Cam Lever	1
10	2306287	Pinion	1	45	\$ 2302700	Cam Lever	1
11	2302476	Washer	1	46	15055	Nut	1
12	2304089	Special Washer	2	47	15200	Cotter Pin	2
13	2304664	Snap Ring	1	48	1385123	Roller	1
14	97847	Bearing	1	49	* 2308218	Pin	1
15	18751	Screw	1	49	% 930775	Pin	1
16	2309050	Anchor	1	50	2302128	Bushing	2
17	* 230447	Bearing Cup	1	51	2309762	Roll Pin	1
17	* 230448	Bearing Cone	1	52	2302047	Shaft	1
17	% 326306	Bearing Cup	1	52	\$ 2311379	Shaft	1
17	% 326307	Bearing Cone	1	53	2309196	Lock Plate	1
18	12918	Snap Ring	1	54	2309240	Switch	1
19	45733	Bearing Cup	1	55	2311087	Cover	1
19	78584	Bearing Cone	1	56	* 279739	Clip	1
20	2307702	Cover	1	56	% 166112	Clip	1
20	\$ 2307272	Cover	1	57	220273	Screw	2
21	+ 2303646	King Pin	1	58	221852	Lockwasher	2
22	2309548	Spring	1	59	2307952	Plug	1
22	\$ 2304482	Spring	1	60	2307321	Sleeve	1
23	2309624	Brake Drum	1	61	* 1198740	Locknut	1
24	2310849	Key	1	61	*\$ 2303255	Locknut	1
25	32415	Key	1	61	% 2304651	Locknut	1
26	Traction Motor	1	61	;%\$ 2310130	Locknut	1
27	* 2303806	Self Threading Screw	1	62	* 98488	Washer	1
27	16718	Screw	1	62	*\$ 2311423	Washer	1
27	% 220271	Self Threading Screw	1	62	% 2307654	Washer	1
28	Motor Cover	1	62	;%\$ 2304396	Washer	1
29	16820	Wheel Bolt	5	63	* 2310037	Washer	1
30	2308186	Rim	1	63	% 1369405	Washer	1
31	2309963	Rubber Tire	1	64	2305299	Housing	1
32	2304321	Axle	1	65	43203	Bearing	4
32	\$ 2304729	Axle	1	66	2304663	Gear and Pinion	1
33	163971	Bearing Cup	2	67	2307761	Washer	1
33	174230	Bearing Cone	2	68	2309788	Gear and Pinion	1
34	58912	Snap Ring	2	69	39381	O-Ring	1
35	2304950	Drive Gear	1				
36	43685	Nut	1				
37	2303356	Spring	1				
37	\$ 2311187	Spring	1				
38	2306902	Brake Shoe	1				

+ Welded to Frame
\$ Cold Storage and Corrosion
* Last used on A215N-942169
% First used on A215N-942170

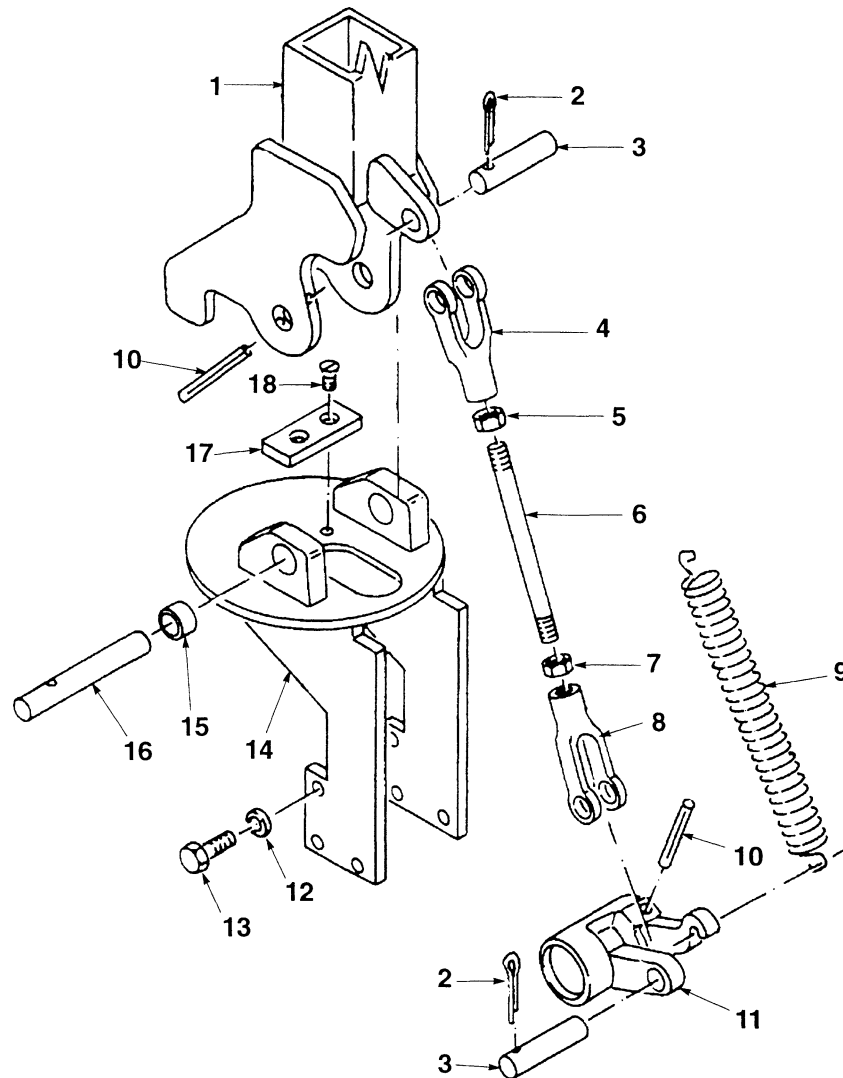
TRACTION MOTOR (Figure 5)



REF.	PART NO.	NAME OF PART	QTY.	REF.	PART NO.	NAME OF PART	QTY.
	2307492	Traction Motor	1	9	1352001	Screw	8
1	1351199	Armature	1	10	1351193	Capscrew	2
2	1352002	Bearing	1	11	1351198	Brush Assembly	2
3	1356201	Adapter	1	12	1351195	Yoke/Ring	1
4	1351196	Screw	4	13	15002	Nut	2
5	1356202	Stator	1	14	1356200	Cover	1
6	2308454	Pole	4	15	1351197	Screw	3
7	1351194	Coil Assembly	1	16	2015346	Spring	4
8	1351970	Terminal Kit	4				

BRAKE-LINKAGE (Figure 6)

TOP-MOUNTED HANDLE



REF.	PART NO.	NAME OF PART	QTY.	REF.	PART NO.	NAME OF PART	QTY.
1		Steer Handle Head (Figure 9)	1	11	2307319	Actuator	1
2	2302589	Cotter Pin	2	12	15156	Lockwasher	6
3	2308972	Pin	2	13	16828	Capscrew	6
4	2302091	Yoke-R.H. Thread	1	14	2306974	Weldment	1
5	15026	Nut-R.H. Thread	1	15	2310319	Bushing	6
6	2307640	Rod	1	16	2302127	Pin	1
7	222123	Nut-L.H. Thread	1	16	\$ 2310176	Pin	1
8	2309127	Yoke-L.H. Thread	1	17	2305519	Pad	1
9	2309548	Spring	1	18	2302370	Screw	2
9	\$ 2304482	Spring	1				
10	2309762	Roll Pin	2				
						\$ Cold Storage and Corrosion	

LIFT LINKAGE AND FORKS

DESCRIPTION	PAGE NO.
LIFT LINKAGE AND FORKS (Figure 7)	12
WHEEL/SUPPORT (Figure 8)	14

LIFT LINKAGE AND FORKS (Figure 7)

